

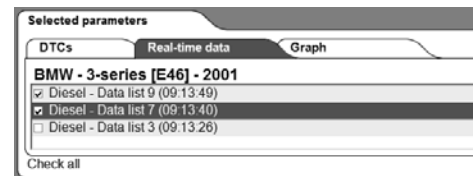
CARS 2010 Release 1 News

This is the first of 2010 and the largest update so far, not only with news in the car database, but also with focus on user-friendliness and functionality. See below for a description.

New program functions

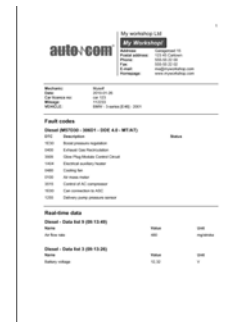
Save/print out data lists

It is now possible to save and easily print out data lists in both graph and list modes together with, for example, error codes. By clicking on the Camera button in the data list the current list or graph is added to the report function. There you can choose to add information to the report, which is saved or printed out.



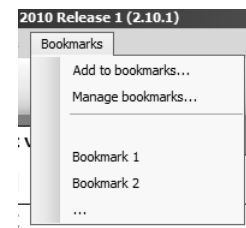
Personal logo on reports

It is now possible to add your own image in the function to print out or save the report. By adding a jpg-image in the workshop information in the program your own image is added to both printed out and saved reports.



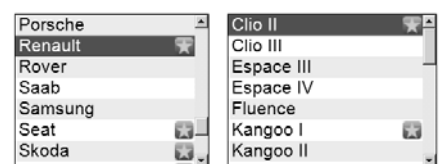
Bookmarks

In the file menu a function has been added to save the current choice of car. This is to enable a quicker return to a car or a system. The user gives each bookmark a name which is shown in the bookmark menu list. When a bookmark is selected the car choice is done automatically.



Markers for new items

To show what is new or updated the manufacturer has a star as a marker and by clicking on model → year → system, you can see exactly what has been added in this release. The function can of course be turned on and off, this is done in the File menu.



Major parallel update (Only ADP 186)

Audi

Updated models/years A4 03-04, A6 99-05.

Cadillac

Updated model/year BLS 09.

Citroën

Updated models/years Saxo 99-03, Xsara Picasso 00-02 & 06, C4 05-06, C4 Picasso 06, C2 05, C3 05-10, Xsara 97-00, Xsara II 03-05, ZX 93-99.

Peugeot

Updated models/years 407 04-06, 607 05, 106 01-04, 206 01-09, 307 04-08, 406 95-99, Expert I 00-04, Expert II 04-07.

Saab

Updated models/year 9-3 09, 9-5 09.

Seat

Updated models/years Toledo 04, Ibiza 04-08, Arosa, 02-05, Leon 01-05.

Skoda

Updated model/years Octavia I 03-06.

Volkswagen

Updated models/years Bora 00 & 04-05, Passat 05-09.

A total of 23 car brands updated in 2010 Release 1
between the years 1998-2010!

Alfa Romeo

Updated models/years 159 06-09, Brera/Spider, MiTo 08-09, 147 06-09
ABS update, updated with several adaptation and adjustment functions.

Audi

Updated models/years A3 03-09. A4 01-09. A5 08-10. Q5 09. A6 05-09. A8 03-09.
TT 07-09. Q7 07-09.

Updated with in-depth diagnostic functionality, for example: diesel engines: injector programming, breather function for fuel system, forced cleaning of particle filter (regeneration), adaptation of differential pressure sensor. Unlocking function for auxiliary heater. Air conditioning updated with programming of new damper motors, teach-in of end-positions and climate impact control done when replacing control unit. There is a new function to erase error codes in all systems, the function is already in the group "multifunction/quick services" together with the system status gateway where it is now possible to quickly read out all the car's systems and also erase all systems. Gateway is updated with function to code in new systems in the car's CAN-bus, necessary when, for example, installing trailer hitch. Updated function for reset of service indicator for the new latest service functions on newer Audi cars, several older models also updated with read-out of service data and present configuration, with possibility to easily change configuration after reset of service.

BMW

Updated models/years 1-series 04-07. 3- series 05-09. 5- series 98-09. 6- series 04-07. 7- series 02-07. X3 04-08. X5 00-08.

Updates to cover model year 2009 and several systems on many present models, updated and simplified reset of service indicator, ABS updated with steering angle calibration. Active steering updated with function for resetting steering angle sensor and engine position sensor. Automatic transmission updated with level check function and reset of adaptation values. Power divider updated with service functions that have to be done when changing components or oil. Read-out of stored odometer reading in light module.

Chrysler

300C 06-07 updated with diagnostics for engine, ABS, automatic transmission, airbag, electronic gear selector and parking assistance. Also updated with function for resetting adaptation values for engine, ABS and automatic transmission.

Dodge

Updated models/years Caliber 08 and Avenger 08, updated with diagnostics for engine and airbag.

Fiat

Croma 05-09, Grande Punto 08-09, Punto 05-09, Bravo 07-09, 500.

ABS update with several adaptation and adjustment functions.

Ford

Updated models/years Kuga 08-10, Fiesta 08-10, Mondeo 00-10, Transit 06-10, Galaxy 06-10, S-Max 06-10, Focus C-Max 03-10, Fusion 03-09, Focus 04-10, Transit Connect 02-10, Tourneo 02-10.

A major update to also cover models for model year 2010 with superb coverage of the cars' systems. Many older models are updated with reset of oil change light in instrument.

Honda – New brand name in the database with this release

New models/years Jazz 09, Civic Type R 07-09, Civic 07-09, CR-V 05-09, Accord 03-09

First release with manufacturer-specific diagnostics for engine, ABS and airbag.

Iveco

Daily 00-06 updated with diagnostics for 2.8L diesel engine, ABS and Automatic transmission.

Jeep

Patriot 08 updated with diagnostics for airbag.

Lancia

Musa 06-09 ABS update with steering angle calibration and calibration acceleration sensor.

Mini

Updated models/years Clubman (R55) 07-09, Convertible (R57) 07-09, Coupe (R56) 07-09.

Models updated with diagnostics for engine and other systems, many programming and adjustment functions, for example: Calibration steering angle sensor, Initiation tire pressure monitoring, Initiation rain sensor and reset of service message.

Mitsubishi

Updated models/years Colt VI 05-07, L200 II 03-05, L200 IV 07-09, Pajero III 03, Pajero IV 08-09, Outlander II 08, Galant VIII 00-01, Carisma 00-02 and Space star 00-02.

Models updated with diagnostics for engine and other systems. Several models have received function for injector programming and steering angle programming.

Mercedes

Updated models/years S-Class (221) 06-09, CL-Class (W215) 03-06, CL-Class (W216) 06-06, Sprinter (903) 05, Sprinter (904) 05, Sprinter (905) 05, Sprinter (905) 10, S-Class (220) 03-05, SL (230) 02-08, M-Class (163) 01-05, E-Class (211) 03-05, E-Class 212 09-10, E-Class Coupe (207) 09-10, C-Class (W204) 07-10, GLK-Class (X204) 07-10, M-Class 09-10, GL-Class 09-10, R-Class (251) 09-10, CLC-Class 08-10, CLS (C219) 10, B-Class (W245) 10, Vito/Vivano (W639) 10.

A major update with many new models/systems. Deactivation of SBC, which is a must to change brake pads, is now also available on the SL models. Many models are updated to cover models for model year 2010.

Nissan

Updated models/years Interstar 03-05 update with diagnostics for SRS, ABS and diesel engine.

Opel

Updated models/years Agila 07-10, Antara 07-10, Astra G 01-09, Astra H 07-10, Combo 07-10, Corsa C 01-10, >Corsa D 07-10, Insignia 10, Meriva 10, Omega B 98-00, Signum 02-08, Vectra B 00-01, Vectra C 02-08, Zafira 01-05, Zafira B 07-10.

A major update with diagnostics for many new systems and updated in-depth functionality in existing systems. Examples of new functions reset function for oil service, teach-in throttle body, calibration steering angle sensor, tire pressure calibration, reset adaptation values, program tire dimension, regeneration particle filter, key programming, etc.

Peugeot

Updated models/years 207 06-10, 308 08-10, 407 07-10, Bipper 08-10, Partner Series 2 08-10, 1007 05-07, boxer series 3 06-10.

A major update with many new models and systems and in-depth diagnostic functions, for example, regeneration, resetting adaptation memory, breather function, steering angle calibration, resetting service indicator, etc.

Renault

Updated models/years Clio II 04-08, Kangoo I 04-08, Traffic II 01-08, 07, Laguna III 07-09.

An update with many new systems and updates of existing systems with in-depth functionalities, for example: programming automatic locking, read configurations, program injectors.

Seat

Ibiza IV 2009 updated with diagnostics for engine and associated systems. New function to read and erase error codes in all systems, the function is already in the group "multifunction/quick services" together with the system status gateway where it is now possible to quickly read out all the car's systems and also erase all systems. Gateway updated with function to 'marry' new systems to the car's CAN-bus, indispensable when, for example, installing trailer hitch.

Smart

Fortwo (451) updated 07-10 with diagnostics for Start/Stop generator, Instrument, signal and relay module and air conditioning.

Toyota

Updated models/years Auris 09-10, Avensis 09-10, Corolla 09, Prius 09-10, IQ 09-10, Urban Cruiser 09-10, Verso 09-10.

A major update with many new models and a good coverage of all of the cars' systems including service reset function.

Volkswagen

Updated models/years Golf V 04-09, Golf VI 09, Polo V 10, Golf Plus I 05-09, Golf Plus II 09, Sharan 01-09, Passat V 05-09, Passat CC 09, Tiguan, 08-09, Touran 03-09, Scirocco 09, Caddy III 03-09, Eos 06-09, Jetta 05-09, Crafter 10, T5 04-09.

Updated with in-depth diagnostic functionality, for example, diesel engines: injector programming, breather function for fuel system, forced cleaning of particle filter (regeneration), adaptation of differential pressure sensor. Unlocking function for auxiliary heater. Air conditioning updated with programming of new damper motors, teach-in of end-positions and climate impact control done when replacing control unit. A new function to erase error codes in all systems, the function is already in the group "multifunction/quick services" together with the system status gateway where it is now possible to quickly read out all the car's systems and also erase all systems. Gateway updated with function to 'marry' new systems to the car's CAN-bus, indispensable when, for example, installing trailer hitch. Several older models also updated with read-out of service data and present configuration, with possibility to easily change configuration after reset of service.

Volvo

V50, S40 and C30 updated 06-08 in the system diesel additive with in-depth functionality for resetting tank level counter diesel additive and refilling of feeder hose with additive, that must be used when refilling during service.