

HOST PRO V1.65 – Appendix

Section

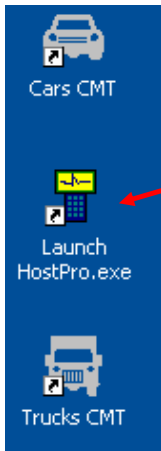
- Registering Handset..... 1
- Updating Handset..... 2

SECTION 1

Registering Handset

Registering Handset using Host Pro v.1.65

A new Multiscan handset needs to be registered before it can be updated. If it is not already registered then follow the below steps.



Once the software is installed to the computer, click on the "Launch HostPro.exe" Icon from the desktop

Soon after opening the program the main Host Pro menu will appear.



Click on the Update icon to go through to the next menu

Updater Ver 1.65

Version Class: Latest previous Old Trial Demo Coverage

COM port: COM1 COM2

Connection Type: USB RS232

MAKER	VERSION	LANGUAGE	RELEASE
<input checked="" type="checkbox"/> OS	Ver 5.16	English	2009-07-06
<input checked="" type="checkbox"/> Scope/Multi/Ignition	Ver 4.11	English	2008-12-01
<input type="checkbox"/> OBD-II	Ver 3.23	English	2009-04-17
<input type="checkbox"/> Gas Analyzer	Ver 1.12	English	2008-05-27
<input checked="" type="checkbox"/> Hyundai Domestic	Ver 6.11	English	2009-06-10
<input checked="" type="checkbox"/> Hyundai Non-USA	Ver 2.21	English	2009-03-30
<input type="checkbox"/> Hyundai USA	Ver 2.11	English	2009-06-11
<input checked="" type="checkbox"/> Kia Domestic	Ver 6.07	English	2009-06-10
<input type="checkbox"/> Kia Non-USA	Ver 2.17	English	2009-03-30
<input type="checkbox"/> Kia USA	Ver 2.10	English	2009-03-30
<input checked="" type="checkbox"/> Daewoo	Ver 6.15	English	2009-06-10
<input checked="" type="checkbox"/> Ssangyong	Ver 6.10	English	2009-03-30
<input checked="" type="checkbox"/> Samsung	Ver 6.08	English	2009-03-30

3) ABS/ESP : DTC, Actuation
4) FULL AUTO AIR/CON : DTC,Live Data, Actuation
5) SRS-AIRBAG : DTC
6) 4WD CONTROL : DTC,Live Data, Actuation
7) POWER TAIL GATE : DTC,Live Data
8) BODY CONTROL UNIT : DTC,Live Data, Actuation
9) IMMOBILIZER : Live Data

Buttons: Connect, Update, **Register**, Cancel

Status: Connected RS232:COM1 English

Once the list has populated, click on the Register icon

User Registration

You are a registered user. You have rights to update till 2010-12-31.

Serial No.

User Name

User Email

User Phone

Country

Distributor

Buttons: Registration, Cancel

Fill out the empty detail boxes;
User Name
User Email
User Phone

Then choose the Country and Distributor.

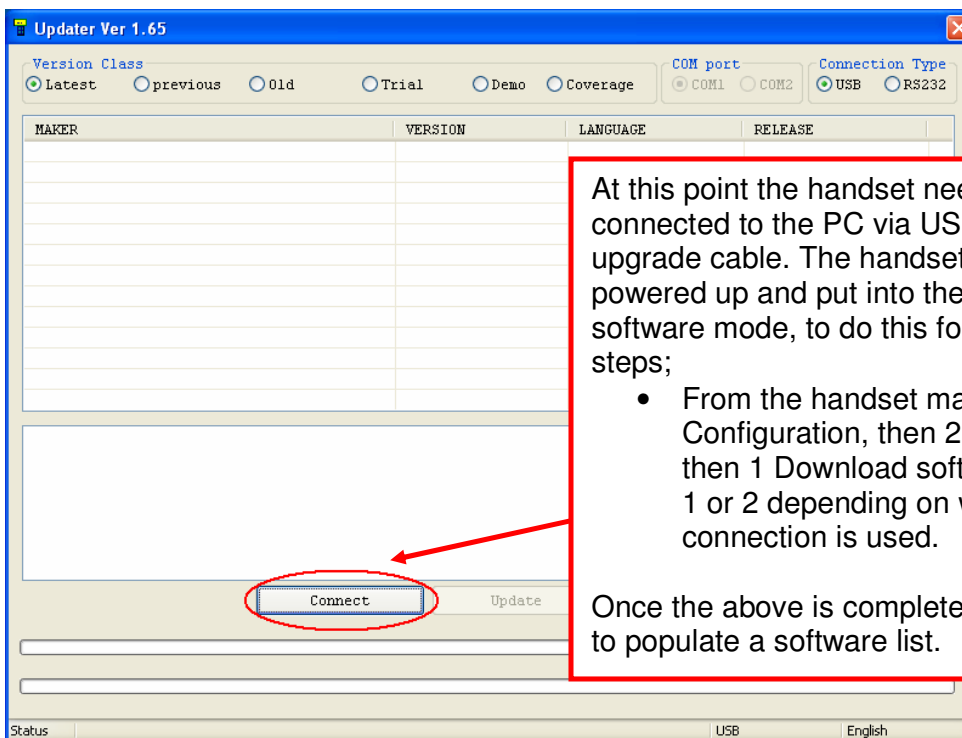
To finish click on Registration

SECTION 2 Updating Handset

To update a registered handset, click on update from the main menu



Click on the Update icon to go through to the next menu

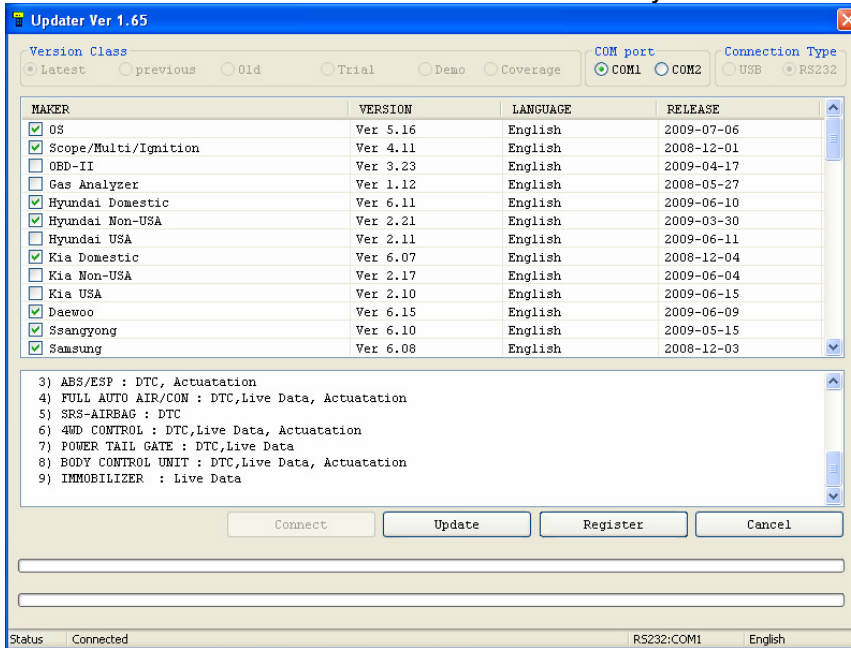


At this point the handset needs to be connected to the PC via USB or the RS232 upgrade cable. The handset also needs to be powered up and put into the download software mode, to do this follow the below steps;

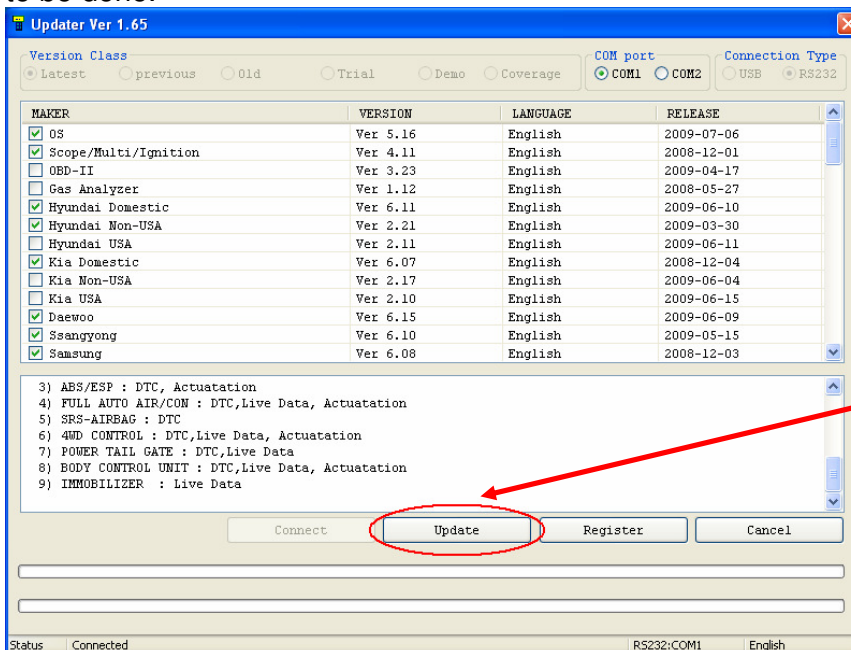
- From the handset main screen press 4 Configuration, then 2 Special function, then 1 Download software, then either 1 or 2 depending on what type of connection is used.

Once the above is complete, click on connect to populate a software list.

Upon successful connection a software list will be populated. The Host Pro program will automatically scan the handset and display what needs to be uploaded. A green tick in the little box means that software is new and needs to be sent to the handset. If there is no green tick that means that version of software is already on the handset.

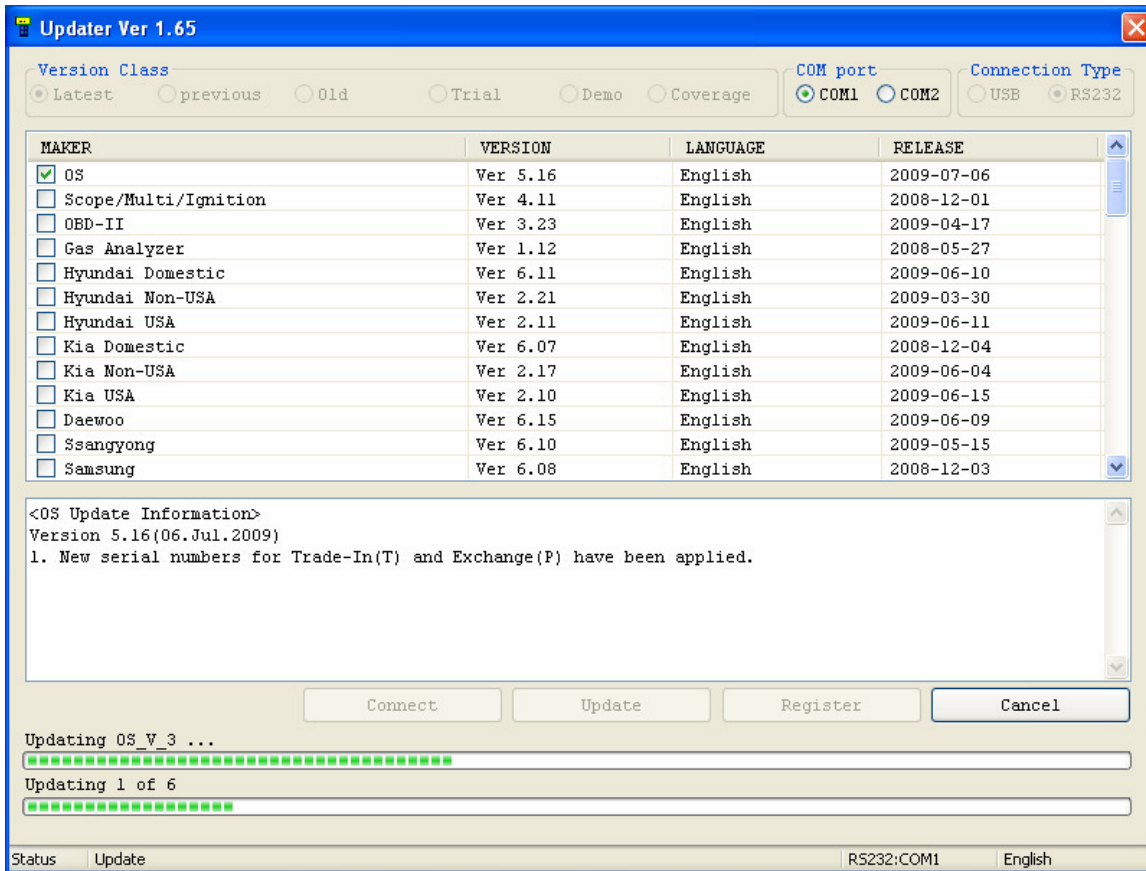


Need be unselected boxes can be ticked to resend particular software, but this rarely needs to be done.



After the software list is displayed, click on Update.

The green bars show progress being made as Host Pro updates the handset. Once it is finished the handset will exit the download software mode and go back to the main menu. The software screen below will stop updating; at that point exit the program.



Updater Ver 1.65

Version Class: Latest previous Old Trial Demo Coverage

COM port: COM1 COM2

Connection Type: USB RS232

MAKER	VERSION	LANGUAGE	RELEASE
<input checked="" type="checkbox"/> OS	Ver 5.16	English	2009-07-06
<input type="checkbox"/> Scope/Multi/Ignition	Ver 4.11	English	2008-12-01
<input type="checkbox"/> OBD-II	Ver 3.23	English	2009-04-17
<input type="checkbox"/> Gas Analyzer	Ver 1.12	English	2008-05-27
<input type="checkbox"/> Hyundai Domestic	Ver 6.11	English	2009-06-10
<input type="checkbox"/> Hyundai Non-USA	Ver 2.21	English	2009-03-30
<input type="checkbox"/> Hyundai USA	Ver 2.11	English	2009-06-11
<input type="checkbox"/> Kia Domestic	Ver 6.07	English	2008-12-04
<input type="checkbox"/> Kia Non-USA	Ver 2.17	English	2009-06-04
<input type="checkbox"/> Kia USA	Ver 2.10	English	2009-06-15
<input type="checkbox"/> Daewoo	Ver 6.15	English	2009-06-09
<input type="checkbox"/> Ssangyong	Ver 6.10	English	2009-05-15
<input type="checkbox"/> Samsung	Ver 6.08	English	2008-12-03

<OS Update Information>
Version 5.16(06.Jul.2009)
1. New serial numbers for Trade-In(T) and Exchange(P) have been applied.

Buttons: Connect, Update, Register, Cancel

Updating OS_V_3 ...

Updating 1 of 6

Status: Update RS232:COM1 English